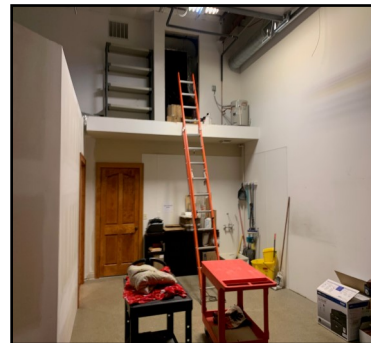


RETAIL SPACE AVAILABLE

3010 RETAIL CENTER, HELSAN BUSINESS PARK, RICHFIELD, WI



SPACE AVAILABLE



Location: 3010 Helsan Drive, Richfield, WI

Building Square Feet: 16,000 sq.ft.

AVAILABLE SPACE: 1,646 sq.ft.

Build-Out: Fully built-out, available for alterations to meet your business needs.

Layout: Unique entrance, Open Office area, 3 private rooms, bathroom, warehouse

Parking: Ample parking

Ceiling Height: Varies. Up to 18' Clear

Lease Rate: Negotiated based on terms

CAM: Low Common Area Charges

Other tenants: Hallman Lindsay Paints, Wicked Archery, and Smart Choice MRI

Special Features:

- Clean, updated and professional
- At Main Entrance of Cabela's, Ashley Furniture & more
- Immediate access to Highways 41 & 45

